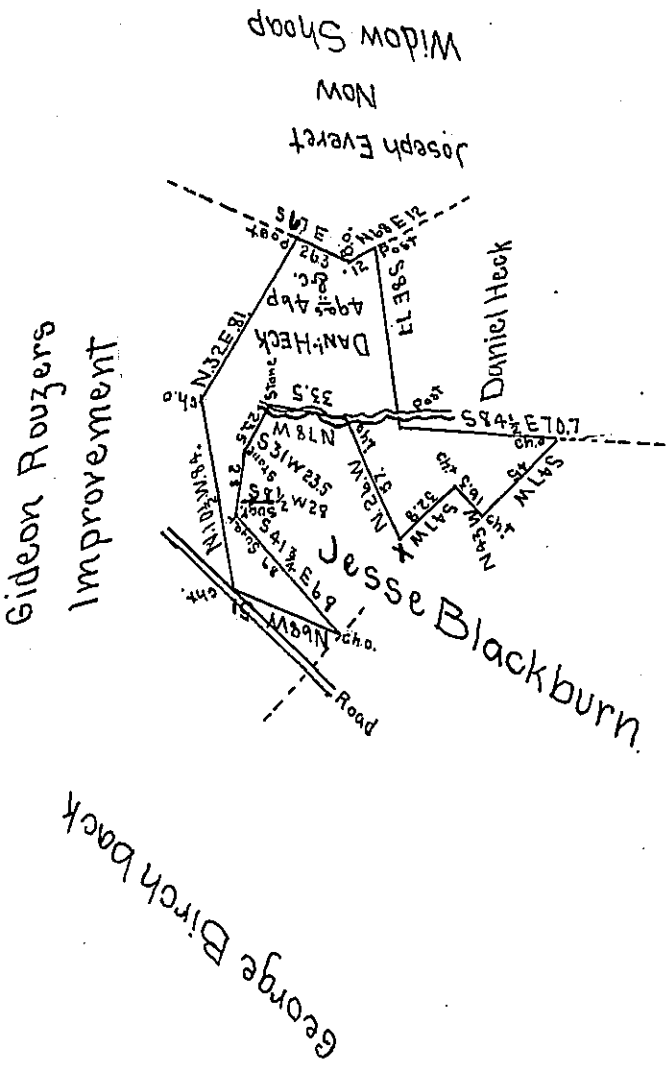


BEARINGS	DIST	N	S	E	W
S47W ch <sup>t</sup> .	45.		307		329
N43W ch <sup>t</sup> .	16.3	119			111
S47W	32.8		224		240
N26W ch <sup>t</sup> .	57.	512			250
N78W stone	33.5	7.0			328
S31W stone	23.5		201		121
S83W sugar	28.		217		4.1
S43E ch <sup>t</sup> .	68.		507	453	
N68W ch <sup>t</sup> .	51.	191			473
N103W ch <sup>t</sup> .	84.	825			153
N32E Post	81.	687		429	
S67E Bo	263		103	242	
N68E Post	12.	4.5		11.1	
S8E Post	77		762	107	
S84E ch <sup>t</sup> .	701		68	704	
			244.9	204.6	



Situate in Napier township Bedford county containing forty nine acres forty-six perches and allowance of six per cent for Roads &c. surveyed the 24<sup>th</sup> February 1842 on Warrant dated 17<sup>th</sup> January 1842 granted to the said Daniel Heck for 50 acres

To Jacob Sallade Esqr.  
Surveyor General

Michael Reed D.S.

IN TESTIMONY that the above is a copy of the original remaining on file in the Department of Internal Affairs of Pennsylvania, made conformably to an Act of Assembly approved the 16th day of February, 1833, I have hereunto set my Hand and caused the Seal of said Department to be affixed at Harrisburg, this fourteenth day of March 1905

*George D. Dawson*  
Secretary of Internal Affairs.